

EDGETM



**Preventative
Maintenance**

EDGETM

NOTICES

The information in this document is subject to change without notice. NO WARRANTY OF ANY KIND IS MADE WITH REGARD TO THIS MATERIAL, INCLUDING, BUT NOT LIMITED TO, THE IMPLIED WARRANTIES OF MERCHANTABILITY AND FITNESS FOR A PARTICULAR PURPOSE.

No liability is assumed for errors contained herein or for incidental damages in connection with the furnishing, performance or use of this material. This document contains proprietary information which is protected by copyright. All rights are reserved. No part of this document may be photocopied, reproduced or translated into another language without prior written consent.

TECHNICAL SUPPORT

If you need technical assistance, you can reach a Digital Print Specialist at +385 1 4618-003 or at azonprinter.com

EDGETM



Table of Contents

Pages You Can't Function Without

4	To Be Safe
5	Preventative Maintenance Schedule
7	Cleaning the Print Head
10	Performing Nozzle Check
15	Head Cleaning
	After a Nozzle Check
16	Cleaning the Capping Station & Wiper Blade
20	Cleaning the UV/LED Light Lens
22	Cleaning the Height Sensor Lens
24	Cleaning the Linear Encoder
27	Replace the Purge Tray Pad
29	Replace the Ink Waste Bottle
32	Replace the Capping Station
36	Replace the Wiper Blade
40	Filling Ink Bottles
43	Waste Pad Reset
44	Recirculation
45	To Save Money

To Be Safe

- Keep all inks, cleaning fluids and primer liquids out of the reach of children.
- Use only approved cleaning agents and then only for the purposes specified in this guide.
- Use only genuine Azon UV-LED inks.
- Keep inks in a cool, dark and dry location.
- This printer produces potentially harmful UV light. Protect eyes and skin from exposure.
- Avoid physical contact with the printer's table and print head while the printer is in operation.
- Avoid dropping items or spilling liquids in or on the printer.
- Keep hair, jewelry or loose clothing away from the moving parts of the printer.
- Lifting this printer by hand requires a minimum of 4 people.
- Do not attempt to repair this machine without prior Azon authorization, unless specified in this guide, only qualified service personnel should attempt any disassembly, repair or access to internal components. If you need to make mechanical adjustments, turn off your printer and disconnect it from all power and data sources.
- Safety glasses and gloves should be used whenever manually cleaning the print head.
- Wear protective gear whenever there is exposure to the inks or UV light.

Preventative Maintenance Schedule

Safety Guidelines

To be safe:

Protect yourself from direct contact with any uncured ink.

If you get ink on your skin, wash immediately with soap and water.

Wear safety glasses and nitrile gloves during all procedures.

Why?

Regular maintenance and cleaning procedures are required and need to be performed as directed.

This will ensure excellent print results and a better quality of life for your printer.

If you have any questions please contact us for assistance.



Preventative Maintenance Schedule

Maintenance Check List

Tasks	Daily	Weekly	Monthly	90 days	As Needed	Ref Page
Clean Print Head		X				7
Nozzle Check	X					10
Auto Clean					X	15
Clean Capping Station & Wiper	X					16
Clean UV/LED lens			X			20
Clean Linear Encoder		X				24
Clean Height Sensor Lens					X	22
Replace Purge Tray Pad					X	27
Replace Ink Waste Bottle		X				29
Fill ink Bottle					x	40
Replace the Capping Station				x		32
Replace the Wiper Blade				x		36
Waste Pad Reset		X				43
Recirculation					x	44

Cleaning the Print Head

Why: Saves time and money by helping prevent nozzles from clogging and providing you better print results each day.

Frequency: Weekly, as part of complete shut down


You will need :
(all provided)

- 1** Safety Glasses
- 2** Nitrile Gloves
- 3** Foam Swabs
- 4** Print Head Cleaning Fluid



Cleaning the Print Head

Step 1

Move the printer UP for 10cm by pressing UP button. 
In Settings menu press Head unlock and then press again to confirm.

Step 2

You will see Head unlock message, and after it is finished, it will move to next screen. At that point the carriage will be unlocked and ready to slide.

Step 3

Slide the carriage to the center of the printer

Step 4

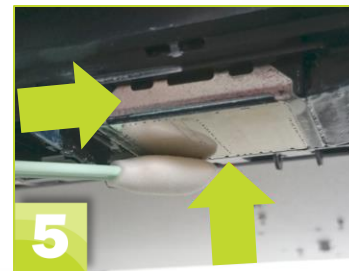
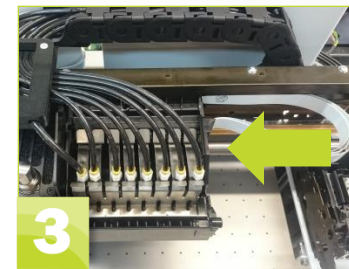
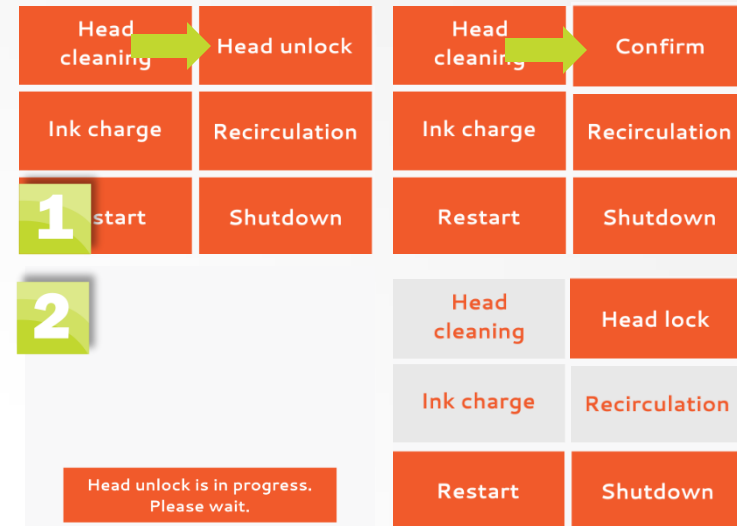
Dip the foam swab in to print head cleaning liquid

NOTES:

Do not double dip, this will contaminate the entire bottle
Once the swab is completely dirty dispose of it properly
Only use lint-free cleaning foam swab provided from Azonprinter company
If you use cotton swab or something similar the cotton fibers will clog the print head

Step 5

Gently clean the print head and the metal edges around the print head



Cleaning the Print Head

Step 6

Tap the button Head lock and then again to confirm.

NOTES: If needed clean the capping station and wiper blade before tapping the button. Press when finished cleaning. Remove all tools, cleaners, and other items from the print bed.

Step 7

Wait until printer comes to ready, when all icons turn orange like on the right picture.

Step 8

After all icons are orange, press the Head cleaning icon and again confirm to proceed with cleaning. After cleaning is finished machine is ready.



Performing a Nozzle Check

Why: This will allow you to check if any of the print nozzles are clogged, to ensure optimal quality print.

NOTES:

When executing a nozzle check, ignore the "zero point" sticker on the print table and position as instructed here. If the test sheet is positioned at the "zero point," the test print will rub off on the surface of your print table. ONLY ignore "zero point" when doing a nozzle check.

Frequency: Daily, before you begin printing your first job, on the end of the day.

You will need :

(all provided)

- 1** Safety Glasses
- 2** Nitrile Gloves
- 3** Nozzle Check Sheet



Performing a Nozzle Check

Step 1

This corner is the zero point and will be set by your technician during the initial install

Step 2

Turn on the printer from the back side. Press the power button socket to position 1.

Step 3

Check if the printer is in Ready state. Press the info tab on the display.

Step 4

Position nozzle check sheet, right side to the end of the table, front side on top of the zero point sticker, refer to picture on the right.

NOTE:

- If the nozzle check sheet is not positioned correctly the nozzle check will print on the surface of your print table.



Performing a Nozzle Check

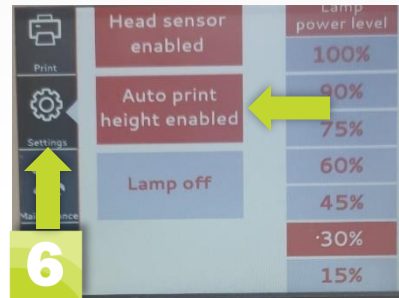
Step 5

Push (hold for 1-2sec) the Auto table UP button. The table will go up and stop automatically. If the table doesn't move, it means it's already all the way up.



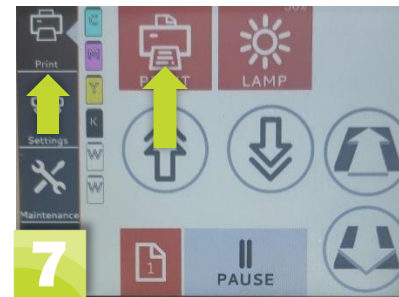
Step 6

When the table stops, select the Settings icon, and check that auto print height is enabled.



Step 7

Press the "PRINT MENU" button. Press the Print button. Stand clear, the gantry will move backward towards the test sheet to position to print.



Step 8

Open Digital Factory. This program was installed by your technician.



Performing a Nozzle Check

Step 9

Select printer status and settings icon.

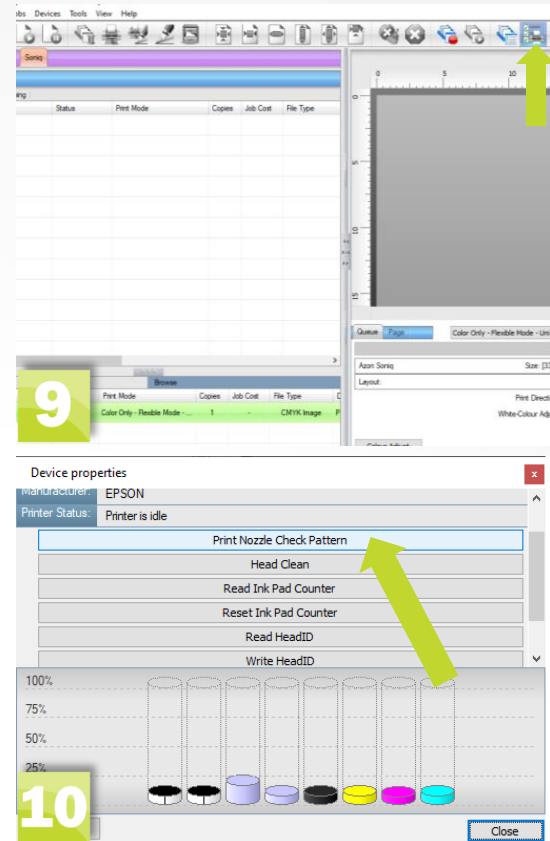
Step 10

Click on print nozzle check Pattern to Initiate nozzle check

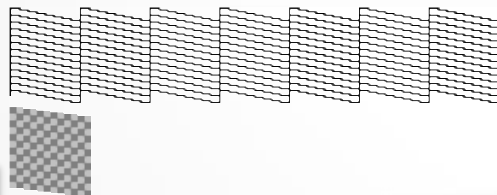
Step 11

When the Nozzle Check is complete carefully inspect the sheet. Remember that the ink is NOT cured so it will smudge if you touch it. If there are no/few gaps in the printed pattern you are good to proceed.

(If there are excessive gaps, see the next page)

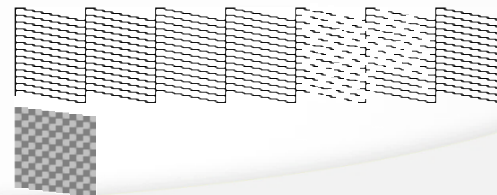


Good Nozzle Check



11

Cleaning Needed



Performing a Nozzle Check

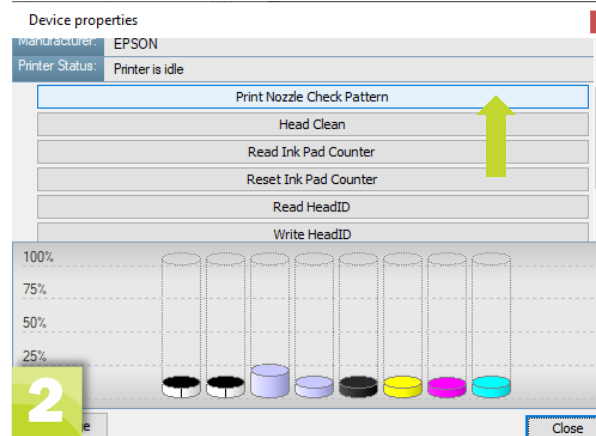
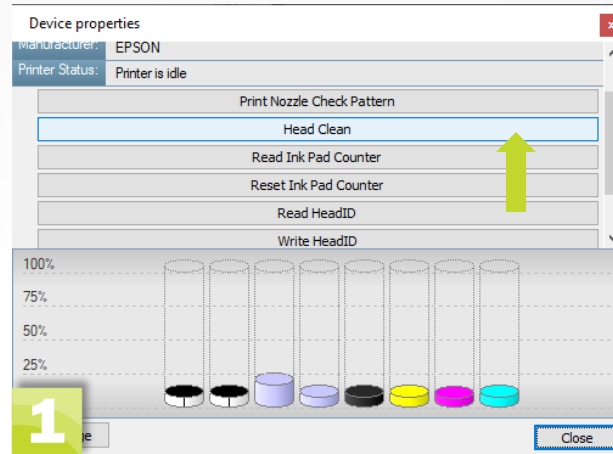
Nozzle Check - If Excessive Gaps

Step 1

Click Head Clean on your computer screen
This will start an automatic cleaning of the print head which will pull more ink into the lines

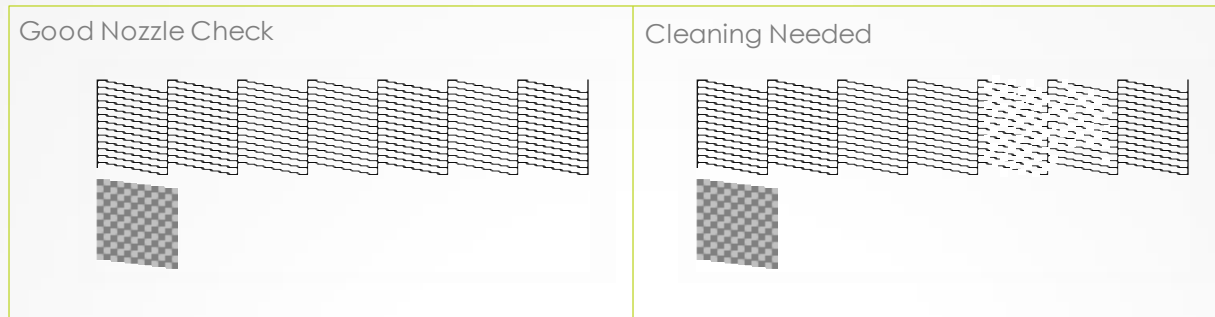
Step 2

When the auto cleaning stops repeat another Nozzle Check



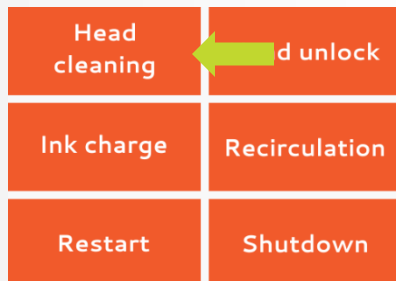
Head Cleaning After a Nozzle Check

In some cases, the Nozzle Check results in many gaps on the nozzle check sheet. Follow the below instructions to conduct print head cleaning



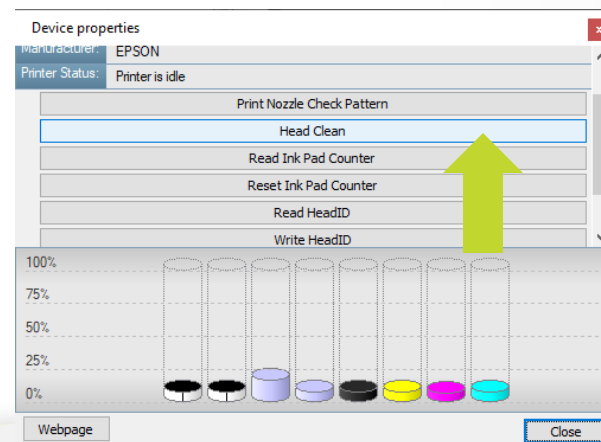
Tap Head Cleaning and then confirm in settings menu on LCD screen.

This will start an automatic print head cleaning to help clear any clogs in the nozzles when the auto cleaning stops run another Nozzle Check



OR

Go to RIP software printer status and settings icon and press it to enter device properties and make head clean. When the auto cleaning stops run another Nozzle Check.



Cleaning the Capping Station & Wiper Blade

Why: Ink build-up around the capping station prevents the print head from forming a tight seal while at rest. This can lead to clogged nozzles.

Frequency: Once a day, after a daily Print Head Cleaning

NOTES: If you just finished cleaning the Print Head and the carriage is already unlocked, start with Step x by dipping the foam swab into the Capping Station Cleaner. If it is not unlocked, begin with Step 1.


You will need :
(all provided)

- 1** Safety Glasses
- 2** Nitrile Gloves
- 3** Foam Swabs
- 4** Azon Cleaning Fluid



Cleaning the Capping Station & Wiper Blade

Step 1

Move the printer UP for 10cm by pressing UP button. 
In Settings menu press Head unlock and then press again to confirm.

Step 2

You will see Head unlock message, and after it is finished, it will move to next screen. At that point the carriage will be unlocked and ready to slide.

Step 3

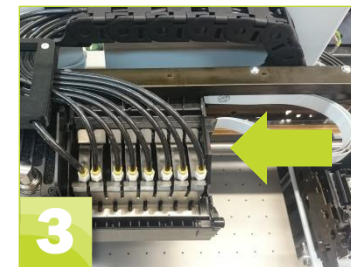
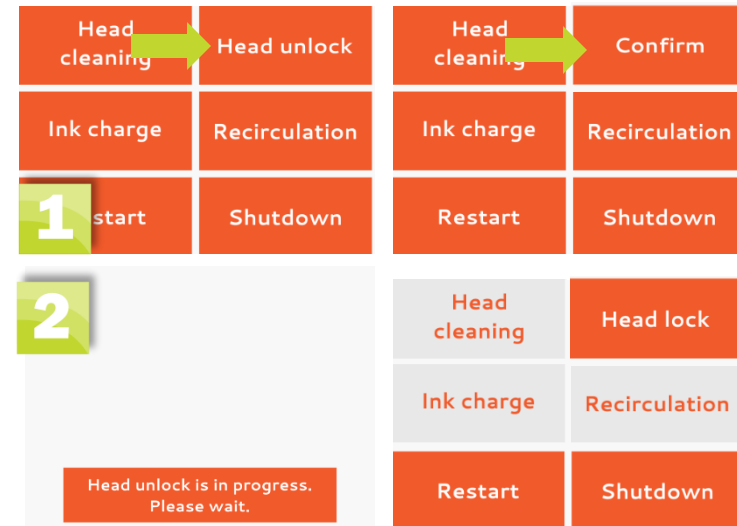
Slide the carriage to the center of the printer

Step 4

Dip the foam swab in to cleaning liquid

NOTES:

Do not double dip, this will contaminate the entire bottle.
Once the swab is completely dirty dispose of it properly.



Cleaning the Capping Station & Wiper Blade

Step 5

Gently clean the rubber edges of the Capping Station

Step 6

Push and hold capping holder asy in the direction which is pointed by green arrow

Step 7

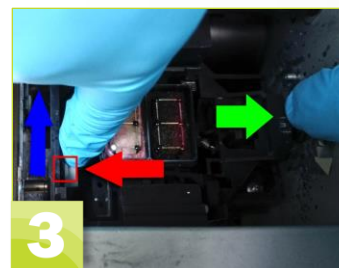
While holding capping holder asy with one hand , locate and push the wiper pin in the direction of the blue arrow with other.

Step 8

Dip the foam swab in to cleaning liquid

NOTES:

Do not double dip , this will contaminate the entire bottle.
Once the swab is completely dirty dispose of it properly.



Cleaning the Capping Station & Wiper Blade

Step 9

Gently clean the wiper with cleaning stick be sure that all ink remains are gone. Once done put the wiper back in original position via vice versa process.

Vice versa process:

- Push and hold capping asy;
- Locate and push wiper pin



Cleaning the UV/LED Light Lens

Why: Ink will build up and cure on the UV/LED light lens. Keeping it clean will ensure that your printer emits optimal light for more even, faster curing.

Frequency: Once a month to help optimize efficiencies, you can also clean the UV/LED light while conducting the Print Head & Capping Station cleanings. (the gantry will already be raised.) If the gantry is already raised, start with Step 3 by placing a mirror under the carriage. If not, begin with Step 1 below.

To Be Safe: you will be instructed to switch the Main Power off on the printer at some point during this process.


You will need :
(all provided)

- 1** Safety Glasses
- 2** Nitrile Gloves
- 3** Foam Swabs
- 4** Azon Cleaning Fluid



Cleaning the UV/LED Light Lens

Step 1

Press and hold the Table Down icon for 2 seconds. 
The table will go down and stop automatically at the end sensor.
If the table does not move, it is already completely down. Press Head unlock and confirm after that to unlock the carriage.

Step 2

Flip the Main Power switch on the back of the printer to 0. This will prevent anyone from accidentally bumping the touch screen and causing the printer to move while you are working on it

Step 3

Dip the foam swab in to cleaning liquid

NOTES:

Do not double dip , this will contaminate the entire bottle.
Once the swab is completely dirty dispose of it properly

Step 4

Gently clean the UV/LED light lens

Step 5

Close the printer cover, remove all tools, cleaners, and other items from the print bed. Flip the Main Power switch back to 1.

- The carriage will move and reset itself. This will take about 90 seconds

Head cleaning	Head unlock	Head cleaning	Confirm
Ink charge	Recirculation	Ink charge	Recirculation
1 start	Shutdown	Restart	Shutdown



Cleaning the Height Sensor Lens

Why: Ink will build up and cure on the Height Sensor Lens, interfering with its ability to adjust to the proper height.

Frequency: As needed

You will need :
(all provided)

- 1** Safety Glasses
- 2** Nitrile Gloves
- 3** Foam Swabs
- 4** Azon Cleaning Fluid



Cleaning the Height Sensor Lens

Step 1

Open the Printer TOP Cover, and locate the Height Sensor Lens.

Step 2

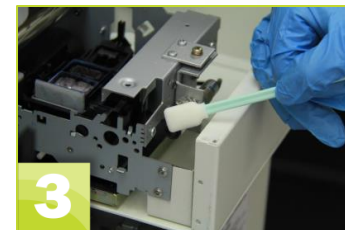
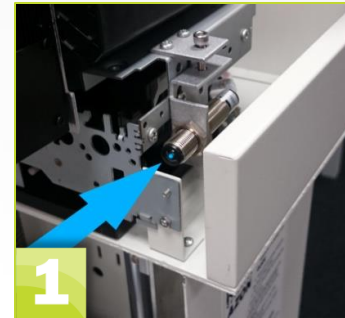
Dip the foam swab in to cleaning liquid

NOTES:

Do not double dip , this will contaminate the entire bottle.
Once the swab is completely dirty dispose of it properly

Step 3

Gently clean the Height Sensor Lens.



Cleaning the Linear Encoder

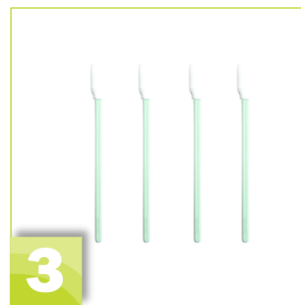
NOTE: If you are performing this at the same time as a Capping Station or Print Head Cleaning to save time (meaning that the carriage would already be unlocked), skip to Step 3. If it is not unlocked, proceed to step 1.

Frequency: Weekly

Why: Dirt build-up on the ribbon will affect the Optical Sensor's ability to read the ribbon and can result in banding and misting.

You will need :
(all provided)

- 1** Safety Glasses
- 2** Nitrile Gloves
- 3** Foam Swabs
- 4** Azon Cleaning Fluid



Cleaning the Linear Encoder

Step 1

In Setting menu press Head unlock and after that confirm.

Step 2

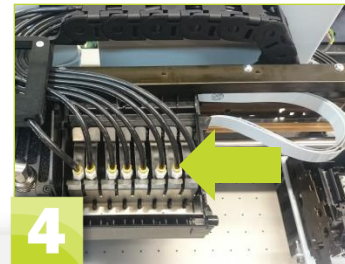
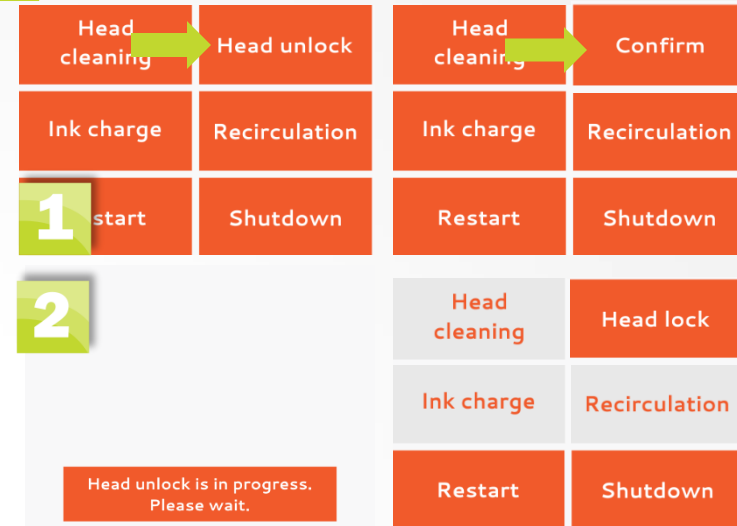
Wait until following image appear on screen:
Its now safe to manually move carriage back and forth.

Step 3

Open the Printer TOP Cover, and locate the Optical Sensor Ribbon

Step 4

Slide the Carriage to the left so that you can clean the right half of the linear encoder



Cleaning the Linear Encoder

Step 5

Dip the foam swab in to cleaning liquid

NOTES:

Do not double dip , this will contaminate the entire bottle.
Once the swab is completely dirty dispose of it properly

Step 6

Gently clean the right half of the Linear Encoder on both sides

Step 7

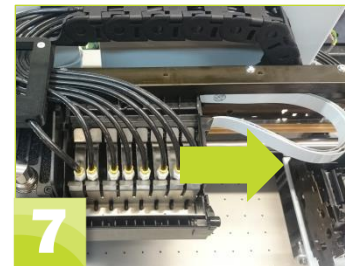
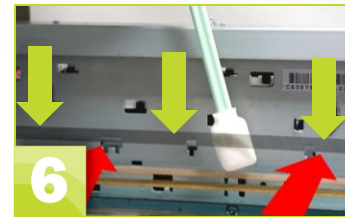
Push the Carriage all the way back to the right, and clean both sides of the left half of the Linear Encoder

Step 8

Close the TOP printer cover

Step 9

Remove all tools, cleaners, and other items from the print bed



Replace the Purge Tray Pad

Why: Ink will build up, cure and eventually build up in the purge tray that it may begin to rub the print head

Frequency: As needed, when the ink builds up to about $\frac{3}{4}$ of the way in the Purge Tray

You will need :

- 1 Safety Glasses
- 2 Nitrile Gloves
- 3 Foam Swabs
- 4 Azon Cleaning Fluid
- 5 Tweezers



Replace the Purge Tray Pad

Step 1

Open the Printer TOP Cover and locate the Purge Tray

Step 2

Carefully lift the Purge Pad out of the Purge Tray with the tweezers

NOTE: The pad may be difficult to pull out because of the cured ink. Be careful not to damage the tray

Step 3

Place the Pad in a disposal bag and dispose of it properly (put in one of the disposable bags that was provided and place in the trash)

Step 4

Place a new, clean Pad back in the Purge Tray

Step 5

Close the printer cover



Replace the Ink Waste Bottle

Frequency: Weekly, depending on how much you print. Your printer will prompt you when the ink waste bottle needs replaced.

You will need :
(all provided)

1 Safety Glasses

2 Nitrile Gloves



Replace the Ink Waste Bottle

When the Waste Bottle is full, this message will appear on your LCD screen

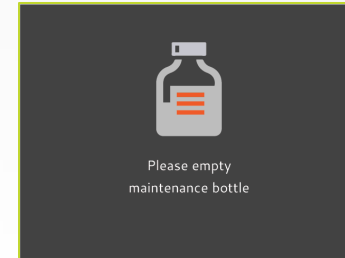
Step 1

Carefully lift the Waste Bottle up, tilt it in towards the printer, then pull it out of the metal cover

Do not tilt it too far when you lift it out, as the ink may spill

Step 2

Hold the lid with one hand, and rotate the bottle clockwise with the other hand



Replace the Ink Waste Bottle

NOTES

The Ink Hoses stay connected to the lid, so you will continue to reuse that same lid on each new waste bottle

Be careful of any ink dripping from the hoses

Be sure not to pull any of the hoses out of the lid

Step 3

Place the lid from the new bottle onto the used Waste Bottle so that it is sealed

Step 4

Place the Waste Bottle in a disposal bag and then into a container for hazardous liquids, for proper disposal

Step 5

Put the lid (containing the hoses) on the new Waste Bottle. (Hold the lid, spin the bottle counterclockwise)

Step 6

Place the Waste Bottle back inside the printer, leaning the top of the bottle slightly in toward the printer and then pressing down in place



Replace the Capping Station

Why: Over time the capping station gets worn. If it does not get replaced it will not seal tight and you will experience clogs in the print head

Frequency: ~ every 90 days

NOTE: The printer can be ON or OFF but not in motion when replacing a capping station

You will need :

1 Safety Glasses

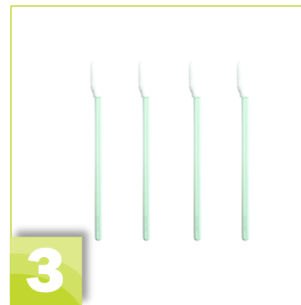
2 Nitrile Gloves

3 Foam Swabs

4 Azon Cleaning Fluid

5 Tweezers

6 Capping Station



Replace the Capping Station

Step 1

In Setting menu press Head unlock and after that confirm.

Step 2

Wait until following image appear on screen:

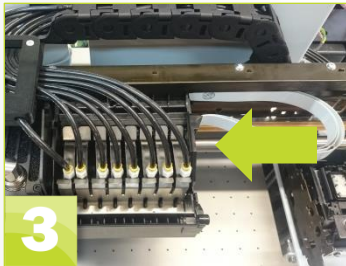
Its now safe to manually move carriage back and forth.

Step 3

Slide the carriage to the left so that you can access the Capping Station

Step 4

Use a needle nose pliers to carefully remove the spring to the right of the capping station



Replace the Capping Station

Step 5

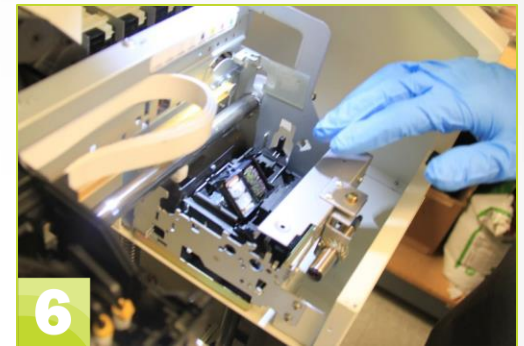
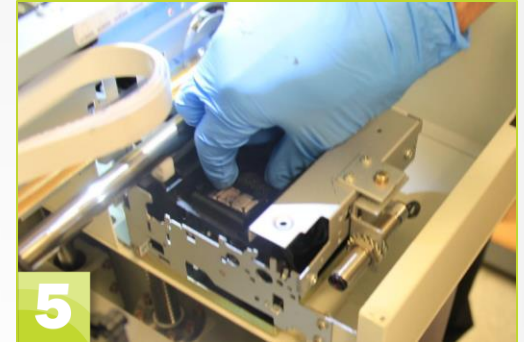
With your index finger, push down on the top edge of capping station so you can feel it tip and release

Step 6

When the capping station is released it will stick up as shown in the picture. You can then lift it out

Step 7

Underneath the capping station is a spring
Tip the capping station to the side so that you can lift the spring out



Replace the Capping Station

Step 8

To ensure you get the correct hose reconnected to the correct hole, disconnect one hose at a time disconnect a hose, reconnect it immediately to the corresponding hole on the new capping station do this same process on the next 3 hoses until they are all reconnected to the new capping station

Capping Station



Replace the Capping Station

Step 9

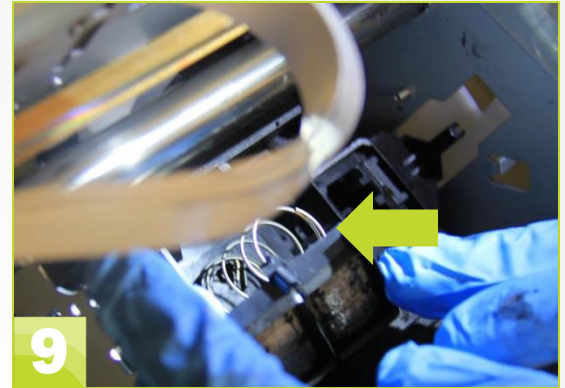
Once the new capping station has all 4 hoses connected to it, you need to seat the large spring back under the capping station

Step 10

Using 2 hands push the capping station down back into place, hooking the edge nearest you first

Step 11

Replace the small spring that hooks to the right of the capping station



Replace the Wiper Blade

Why: The wiper blade periodically and automatically wipes excess ink off of the print head to help prevent drips and clogs. Over time the wiper will wear and warp and not clean the print head effectively.

Frequency: Approximately every 90 days

NOTE:

The wiper blade is located inside the pump and cap assembly next to the capping station. The wiper blade can be different colors, sometimes white, gray or black.

1 Good Wiper

2 Warped Wiper

3 Worn Wiper



Replace the Wiper Blade

You will need :

1 Safety Glasses

2 Nitrile Gloves

3 Foam Swabs

4 Azon Cleaning Fluid

5 Tweezers

6 Wiper



Replace the Wiper Blade

Step 1

In Setting menu press Head unlock and after that confirm.

Step 2

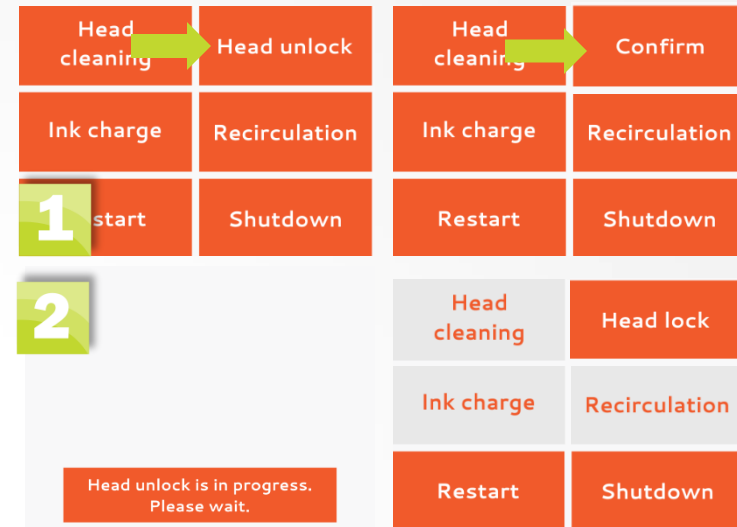
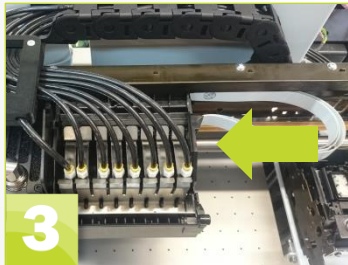
Wait until following image appear on screen:
Its now safe to manually move carriage back and forth.

Step 3

Slide the carriage to the left so that you can access the Capping Station

Step 4

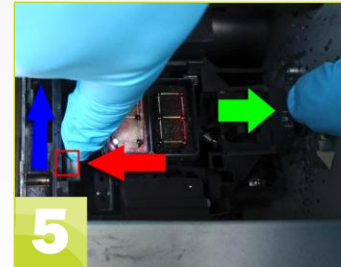
Push and hold capping holder asy in the direction which is pointed by green arrow



Replace the Wiper Blade

Step 5

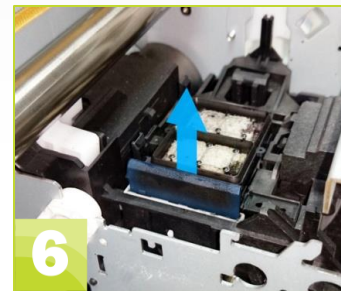
While holding capping holder asy with one hand , locate and push the wiper pin in the direction of the blue arrow with other



Step 6

With a tweezers, gently pull the wiper up until it comes out of the pump & cap assembly

Note the way the wiper is positioned when you remove it so that you can place the new wiper back in the same direction



Step 7

Insert new wiper into wiper slot
[its need to be in same direction as the old one]



Step 8

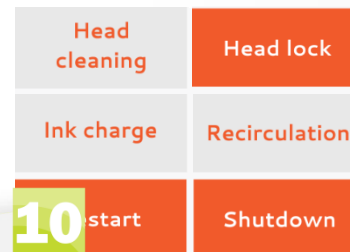
Remove all tools, cleaners, and other items from the print bed

Step 9

Close the printer cover

Step 10

Click Head lock and confirm.



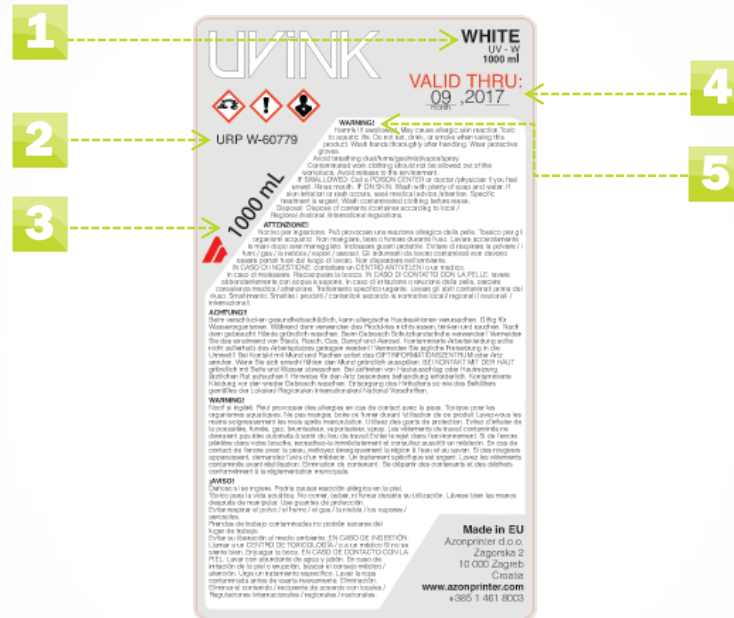
Filling Ink Bottles

Why: If a printer ink bottle is empty printer will not print that color and likely not produce a print of expected quality
Warning will be shown on LCD touch screen

Frequency: As needed

NOTES: The printer can be ON or OFF but not in motion when filling ink bottle. If replacing the white ink be sure to shake transport bottle for 1 minute before filling the printer bottle

- 1 Color Name
- 2 Batch Number
- 3 Volume
- 4 Expiration Date
- 5 Warning/Disposal



White Ink Bottle

White Ink Bottle Label

Filling Ink Bottles

Step 1

Open printer bottle which you want to fill with corresponding ink. [open one bottle at the time to prevent any UV exposure / dust or any other influence which may occur while bottle is open]

Step 2

Open ink bottle, remove protective foil and pour ink from ink bottle to printer bottle [make sure to pour ink in correct printer bottle]

Step 3

Close printer bottle
[make sure to close the bottle all the way]



Shake only white ink inside transport bottles
prior to pouring into printer bottle



Shake white ink inside printer bottles every
day before starting up machine

Waste Pad Reset

Step 1

On the back of the printer, in the middle of the bridge, there is USB port, plug in the USB cord to the printer and to your computer. Machine must be on.

Step 2

Open Digital factory . This program was installed by your technician.

Step 3

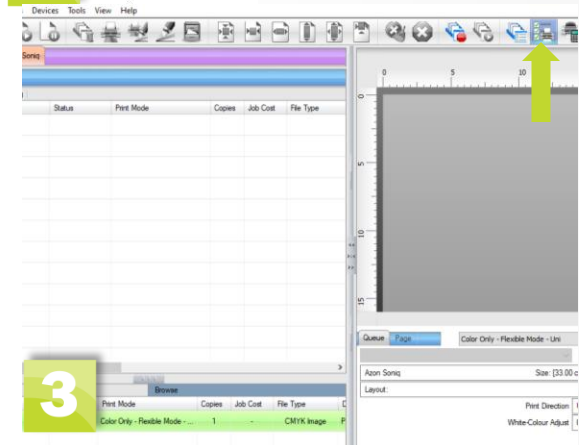
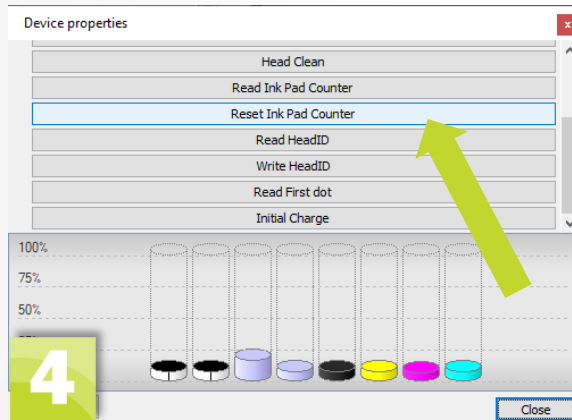
Select printer status and settings icon

Step 4

Click on Reset Ink Pad Counter to initiate Reset.

Step 5

After that you need to turn off machine and turn it on again, to finish the reset. Pull out the USB cable.



Recirculation

Recirculation

in case of long hours printing if opacity of white ink decrease shake white ink bottles and tap Recirculation button and press confirm. [this function is used to ensure optimal white ink opacity]

Step 1

Shake white ink printer bottle back and fourth for about 1 minute

Step 2

Go to Maintenance Menu and tap Recirculation button and then confirm to start Recirculation of White ink.

Step 3

Make a nozzle check to ensure that all nozzles are okay



Head cleaning	Head unlock	Head cleaning	Head unlock
Ink charge	Recirculation	Ink charge	Confirm
2 start	Shutdown	Restart	Shutdown

To Save Money

We recommend that if you know some of your inks are low and you are about to print a large or expensive job, replace any low cartridges to prevent running out before the job finishes printing. You can then put the low cartridges back in to use for smaller jobs.

This will allow you to use as much ink as possible while minimizing your risk of ruining a job.